



ARM *Supplies* Ltd.



ISO9001:2008

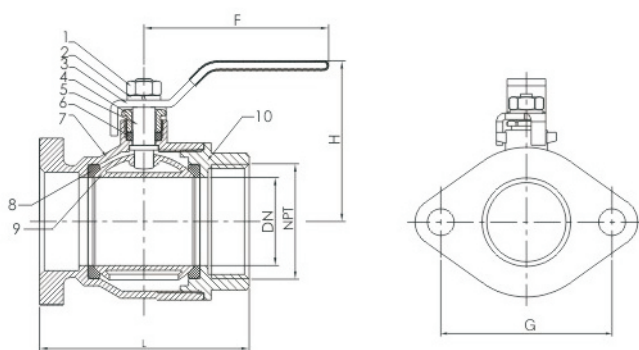
Flanged Isolating Pump Valve

Fixed/Solid Flange X Threaded FNPT

Full Port Valve – 600WOG – 150WSP – Forged Brass

Valve Kit Includes: 1 Gasket, 2 Bolts, 2 Nuts, 1 T- Handle

Available Size: 3/4" – 1 1/2"



MATERIAL LIST

NO.	PART	SPECIFICATION
1	Nut	Steel
2	Lock washer	Steel
3	Handle	Steel with Zinc Blue Plated
4	Gland nut	ASTM B124
5	Stem	ASTM B124
6	Stem packing	Teflon (P.T.F.E)
7	Body	ASTM B124
8	Seat ring	Teflon (P.T.F.E)
9	Ball	ASTM B124 Chromeplated
10	Bonnet	ASTM B124

DIMENSION(mm)

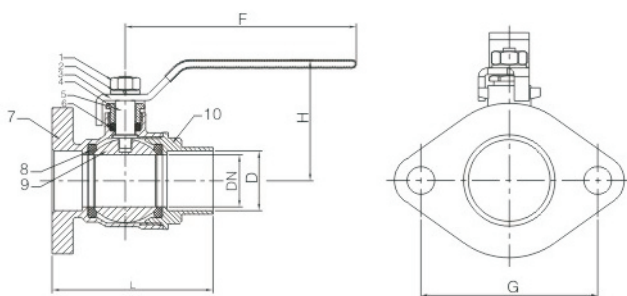
Part Number	NPT	DN	L	H	F	G	Inner	Master
VVST 159 034	3/4"	19	66.5	60.5	110	80	1	12
VVST 159 100	1"	25	78	65	110	80	1	12
VVST 159 114	1 1/4"	29	90	69	110	80	1	12
VVST 159 112	1 1/2"	37	99.5	74	110	80	1	12

Flanged Isolating Pump Valve

Fixed/Solid Flange X Solder/Sweat

Full Port Valve – 600WOG – 150WSP – Forged Brass

Valve Kit Includes: 1 Gasket, 2 Bolts, 2 Nuts, 1 T- Handle



MATERIAL LIST

NO.	PART	SPECIFICATION
1	Nut	Steel
2	Lock washer	Steel
3	Handle	Steel with Zinc Blue Plated
4	Gland nut	ASTM B124
5	Stem	ASTM B124
6	Stem packing	Teflon (P.T.F.E)
7	Body	ASTM B124
8	Seat ring	Teflon (P.T.F.E)
9	Ball	ASTM B124 Chromeplated
10	Bonnet	ASTM B124

DIMENSION(mm)

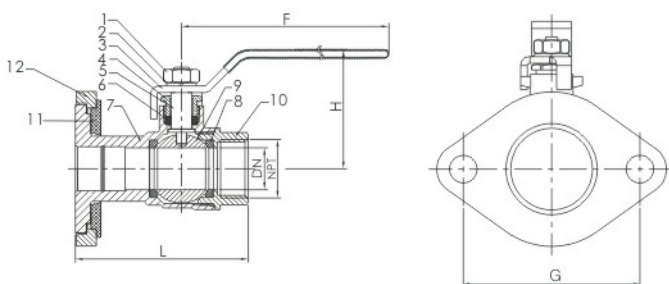
Part Number	D	DN	L	H	F	G	Inner	Master
VVSS 160 034	3/4"	19	66.5	60.5	110	80	1	12
VVSS 160 100	1"	25	78	65	110	80	1	12
VVSS 160 114	1 1/4"	29	90	69	110	80	1	12
VVSS 160 112	1 1/2"	37	99.5	74	110	80	1	12

Flanged Isolating Pump Valve

Swivel/Rotating Flange X Threaded FNPT

Full Port Valve – 600WOG – 150WSP – Forged Brass

Valve Kit Includes: 2 Gaskets, 2 Bolts, 2 Nuts, 1 T- Handle



MATERIAL LIST

NO.	PART	SPECIFICATION
1	Nut	Steel
2	Lock washer	Steel
3	Handle	Steel with Zinc Blue Plated
4	Gland nut	ASTM B124
5	Stem	ASTM B124
6	Stem packing	Teflon (P.T.F.E)
7	Body	ASTM B124
8	Seat ring	Teflon (P.T.F.E)
9	Ball	ASTM B124 Chromeplated
10	Bonnet	ASTM B124
11	Rubber washer	NBR
12	Flange	ASTM B124

DIMENSION(mm)

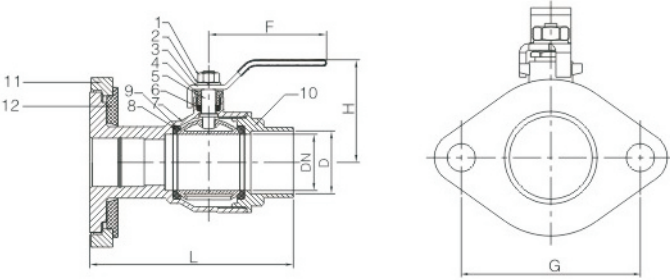
Part Number	NPT	DN	L	H	F	G	Inner	Master
VVRT 179 034	3/4"	19	78.2	53.5	77	80	1	12
VVRT 179 100	1"	25	105.5	57.5	77	80	1	12
VVRT 179 114	1 1/4"	29	109.5	61.5	77	80	1	12
VVRT 179 112	1 1/2"	37	127	67	77	80	1	12

Flanged Isolating Pump Valve

Swivel/Rotating Flange X Solder/Sweat

Full Port Valve – 600WOG – 150WSP – Forged Brass

Valve Kit Includes: 2 Gaskets, 2 Bolts, 2 Nuts, 1 T- Handle



MATERIAL LIST

NO.	PART	SPECIFICATION
1	Nut	Steel
2	Lock washer	Steel
3	Handle	Steel with Zinc Blue Plated
4	Gland nut	ASTM B124
5	Stem	ASTM B124
6	Stem packing	Teflon (P.T.F.E)
7	Body	ASTM B124
8	Seat ring	Teflon (P.T.F.E)
9	Ball	ASTM B124 Chromeplated
10	Bonnet	ASTM B124
11	Flange	ASTM B124
12	Rubber washer	NBR

DIMENSION(mm)

Part Number	D	DN	L	H	F	G	Inner	Master
VVRS 180 034	3/4"	19	80.5	53.5	77	80	1	12
VVRS 180 100	1"	25	109	57.5	77	80	1	12
VVRS 180 114	1 1/4"	29	120.5	61.5	77	80	1	12
VVRS 180 112	1 1/2"	37	138.5	67	77	80	1	12

Flanged Isolating Pump Valve

Fixed/Solid Flange w/Drain X Threaded FNPT

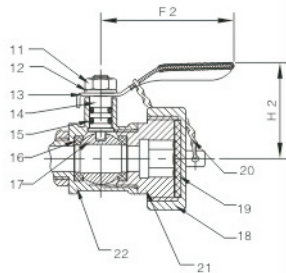
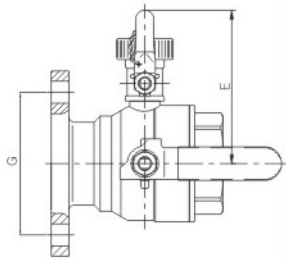
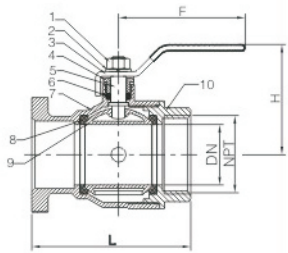
Full Port Valve – 600WOG – 150WSP – Forged Brass

Valve Kit Includes: 1 Gasket, 2 Bolts, 2 Nuts, 1 T- Handle



MATERIAL LIST

NO	Part	SPECIFICATION
1	Nut	Steel
2	Lockwasher	Steel
3	Handle	Steel with Zinc Blue Plated
4	Gland nut	ASTM B124
5	Stem	ASTM B124
6	Stem packing	Teflon (P.T.F.E)
7	Body	ASTM B124
8	Seat ring	Teflon (P.T.F.E)
9	Ball	ASTM 124 chromeplated
10	Bonnet	ASTM B124
11	Nut	Stainless steel
12	Lockwasher	Stainless steel
13	Handle	Stainless steel
14	Stem	ASTM B124
15	O-ring	NBR
16	Seat ring	Teflon (P.T.F.E)
17	Ball	ASTM B124 Chromeplated
18	Locking cover	ASTM B124
19	Rubber pad	NBR
20	Chain	Stainless steel
21	Bonnet	ASTM B124
22	Body	ASTM B124



DIMENSION(mm)

Part Number	NPT	DN	L	H	F	E	G	F2	H2	Inner	Master
VVSTD 149 034	3/4"	19	78.2	53.5	77	72.5	81	41	29.5	1	12
VVSTD 149 100	1"	25	86.5	57.5	77	77	81	41	29.5	1	12
VVSTD 149 114	1 1/4"	29	88	61.5	77	80.5	81	41	29.5	1	12
VVSTD 149 112	1 1/2"	37	97.2	67	77	87	81	41	29.5	1	12

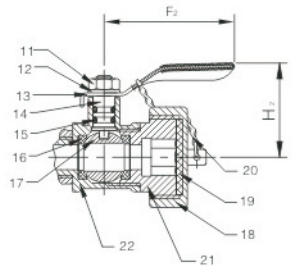
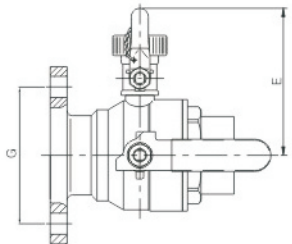
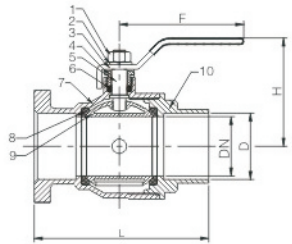
Flanged Isolating Pump Valve

Fixed/Solid Flange w/Drain X Solder/Sweat
 Full Port Valve – 600WOG – 150WSP – Forged Brass
 Valve Kit Includes: 1 Gasket, 2 Bolts, 2 Nuts, 1 T- Handle



MATERIAL LIST

NO	Part	SPECIFICATION
1	Nut	Steel
2	Lockwasher	Steel
3	Handle	Steel with Zinc Blue Plated
4	Gland nut	ASTM B124
5	Stem	ASTM B124
6	Stem packing	Teflon (P.T.F.E)
7	Body	ASTM B124
8	Seat ring	Teflon (P.T.F.E)
9	Ball	ASTM 124 chromeplated
10	Bonnet	ASTM B124
11	Nut	Stainless steel
12	Lockwasher	Stainless steel
13	Handle	Stainless steel
14	Stem	ASTM B124
15	O-ring	NBR
16	Seat ring	Teflon (P.T.F.E)
17	Ball	ASTM B124 Chromeplated
18	Locking cover	ASTM B124
19	Rubber pad	NBR
20	Chain	Stainless steel
21	Bonnet	ASTM B124
22	Body	ASTM B124



DIMENSION(mm)

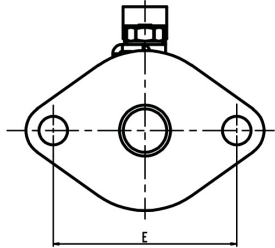
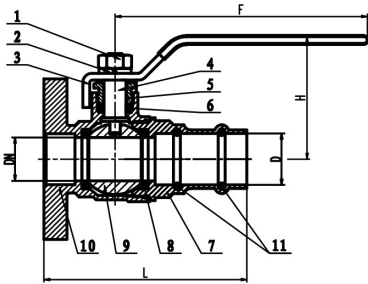
Part Number	D	DN	L	H	F	E	G	F2	H2	Inner	Master
VVSSD 150 034	3/4"	19	83.5	53.5	77	72.5	81	41	29.5	1	12
VVSSD 150 100	1"	25	92	57.5	77	77	81	41	29.5	1	12
VVSSD 150 114	1 1/4"	29	100.5	61.5	77	80.5	81	41	29.5	1	12
VVSSD 150 112	1 1/2"	37	108.7	67	77	87	81	41	29.5	1	12

Flanged Isolating Pump Valve

Solid(Fixed)Flanged Valve, Forged Brass, Full Port
 Flanged x (Press Connection)

Available Size: 3/4" - 1 1/2" (600WOG & 150 WSP)

Valve Set Includes: 2 Gaskets, 2 Bolts, 2 Nuts & T - Handle(Yellow)



MATERIAL LIST

NO	Part	SPECIFICATION
1	Nut	Steel
2	Lock Washer	Steel
3	Handle	Steel with Zinc-Blue Plated
4	Stem	ASTM B124
5	Gland Nut	ASTM B124
6	Stem Packing	Teflon(P.T.F.E)
7	Bonnet	ASTM B124
8	Seat ring	Teflon(P.T.F.E)
9	Ball	ASTM B124 chromeplated
10	Body	ASTM B124
11	O-Ring	NBR

DIMENSION(mm)

Part Number	D	DN	H	L	E	F	Inner	Master
VVSP1601034	3/4"	19	53.5	88.5	80	110	1	12
VVSP1601100	1"	25	57.5	96.5	80	110	1	12
VVSP1601114	1 1/4"	29	61.5	110	80	110	1	12
VVSP1601112	1 1/2"	37	67	118.5	80	110	1	12

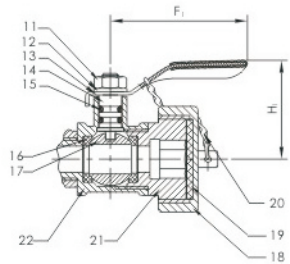
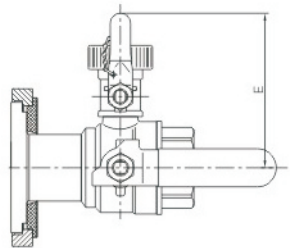
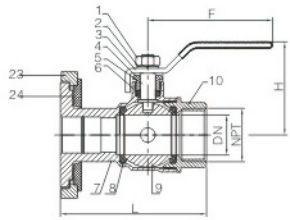
Flanged Isolating Pump Valve

Swivel/Rotating Flange w/Drain X Threaded FNPT
 Full Port Valve – 600WOG – 150WSP – Forged Brass
 Valve Kit Includes: 2 Gaskets, 2 Bolts, 2 Nuts, 1 T- Handle
 Available Size: 3/4" – 1 1/2"



MATERIAL LIST

NO	Part	SPECIFICATION
1	Nut	Steel
2	Lockwasher	Steel
3	Handle	Steel with Zinc Blue Plated
4	Gland nut	ASTM B124
5	Stem	ASTM B124
6	Stem packing	Teflon (P.T.F.E)
7	Body	ASTM B124
8	Seat ring	Teflon (P.T.F.E)
9	Ball	ASTM 124 chromeplated
10	Bonnet	ASTM B124
11	Nut	Stainless steel
12	Lockwasher	Stainless steel
13	Handle	Stainless steel
14	Stem	ASTM B124
15	O-ring	NBR
16	Seat ring	Teflon (P.T.F.E)
17	Ball	ASTM B124 Chromeplated
18	Locking cover	ASTM B124
19	Rubber pad	NBR
20	Chain	Stainless steel
21	Bonnet	ASTM B124
22	Body	ASTM B124
23	Flange	ASTM B124
24	Rubber washer	NBR



DIMENSION(mm)

Part Number	NPT	DN	L	H	F	E	F ₁	H ₁	Inner	Master
VVRTD 179B 034	3/4"	19	78.2	53.5	77	72.5	41	29.5	1	12
VVRTD 179B 100	1"	25	105.5	57.5	77	77	41	29.5	1	12
VVRTD 179B 114	1 1/4"	29	109.5	61.5	77	80.5	41	29.5	1	12
VVRTD 179B 112	1 1/2"	37	127	67	77	87	41	29.5	1	12

Flanged Isolating Pump Valve

Swivel/Rotating Flange w/Drain X Solder/Sweat

Full Port Valve – 600WOG – 150WSP – Forged Brass

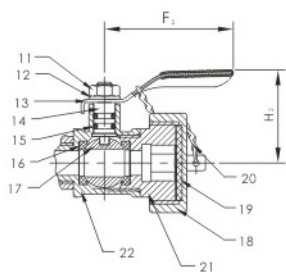
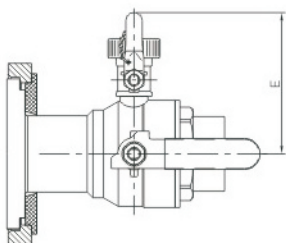
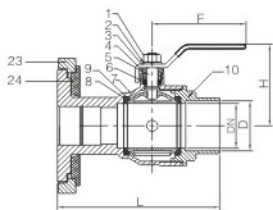
Valve Kit Includes: 2 Gaskets, 2 Bolts, 2 Nuts, 1 T- Handle

Available Size: 3/4" – 1 1/2"



MATERIAL LIST

NO	Part	SPECIFICATION
1	Nut	Steel
2	Lockwasher	Steel
3	Handle	Steel with Zinc Blue Plated
4	Gland nut	ASTM B124
5	Stem	ASTM B124
6	Stem packing	Teflon (P.T.F.E)
7	Body	ASTM B124
8	Seat ring	Teflon (P.T.F.E)
9	Ball	ASTM 124 chromeplated
10	Bonnet	ASTM B124
11	Nut	Stainless steel
12	Lockwasher	Stainless steel
13	Handle	Stainless steel
14	Stem	ASTM B124
15	O-ring	NBR
16	Seat ring	Teflon (P.T.F.E)
17	Ball	ASTM B124 Chromeplated
18	Locking cover	ASTM B124
19	Rubber pad	NBR
20	Chain	Stainless steel
21	Bonnet	ASTM B124
22	Body	ASTM B124
23	Flange	ASTM B124
24	Rubber washer	NBR



DIMENSION(mm)

Part Number	D	DN	L	H	F	E	F ₂	H ₂	Inner	Master
VVRSD 180B 034	3/4"	19	80.5	53.5	77	72.5	41	29.5	1	12
VVRSD 180B 100	1"	25	109	57.5	77	77	41	29.5	1	12
VVRSD 180B 114	1 1/4"	29	120.5	61.5	77	80.5	41	29.5	1	12
VVRSD 180B 112	1 1/2"	37	138.5	67	77	87	41	29.5	1	12

Flanged Isolating Pump Valve

Swivel/Rotating Flange w/Drain X Press

Full Port Valve – 600WOG – 150WSP – Forged Brass

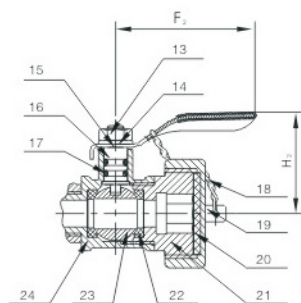
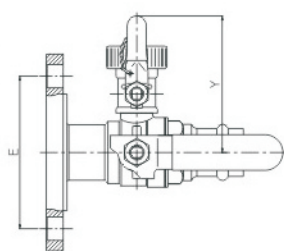
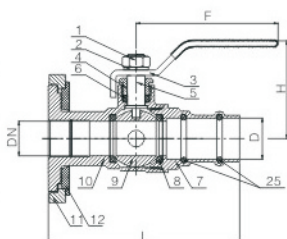
Valve Kit Includes: 2 Gaskets, 2 Bolts, 2 Nuts, 1 T- Handle

Available Size: 3/4" – 1 1/2" "



MATERIAL LIST

NO	Part	SPECIFICATION
1	Nut	Steel
2	Lockwasher	Steel
3	Handle	Steel with Zinc Blue Plated
4	Gland nut	ASTM B124
5	Stem	ASTM B124
6	Stem packing	Teflon
7	Bonnet	ASTM B124
8	Seat ring	Teflon
9	Ball	ASTM 124 chromeplated
10	Body	ASTM B124
11	Flange	ASTM B124
12	Gasket	NBR
13	Nut	Stainless steel
14	Lock Washer	Stainless steel
15	Handel	Stainless steel
16	Stem	ASTM B124
17	O-Ring	NBR
18	Chain	Stainless Steel
19	Locking cover	ASTM B124
20	Rubber pad	NBR
21	Bonnet	ASTM B124
22	Seat Ring	Teflon
23	Ball	ASTM B124 Chromeplated
24	Body	ASTM B124
25	O-Ring	EPDM



DIMENSION(mm)

Part Number	D	DN	L	H	F	E	F ₂	H ₂	Inner	Master
VVRPD 180B1 034	3/4"	19	105.5	53.5	77	80	41	29.5	1	12
VVRPD 180B1 100	1"	25	128.5	57.5	77	80	41	29.5	1	12
VVRPD 180B1 114	1 1/4"	29	141	61.5	77	80	41	29.5	1	12
VVRPD 180B1 112	1 1/2"	37	157.5	67	77	80	41	29.5	1	12

Flanged Isolating Pump Valve

Swivel/Rotating Flange X Press

Full Port Valve – 600WOG – 150WSP – Forged Brass

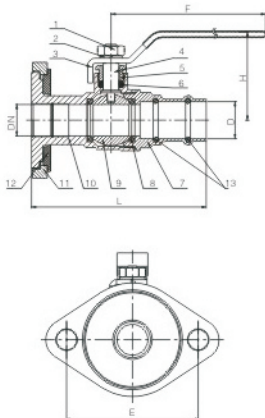
Valve Kit Includes: 2 Gaskets, 2 Bolts, 2 Nuts, 1 T- Handle

Available Size: 3/4" – 1 1/2"



MATERIAL LIST

NO.	PART	SPECIFICATION
1	Nut	Steel
2	Lockwasher	Steel
3	Handle	Steel with Zinc Blue Plated
4	Stem	ASTM B124
5	Gland nut	ASTM B124
6	Stem packing	Teflon
7	Bonnet	ASTM B124
8	Seat ring	Teflon
9	Ball	ASTM B124 Chromeplated
10	Body	ASTM B124
11	Flange	ASTM B124
12	Gasket	NBR
13	O-Ring	EPDM



DIMENSION(mm)

Part Number	D	DN	H	L	E	F	Inner	Master
VVRPD 1801 034	3/4"	19	53.5	105.5	80	77	1	12
VVRPD 1801 100	1"	25	57.5	128.5	80	77	1	12
VVRPD 1801 114	1 1/4"	29	61.5	141	80	77	1	12
VVRPD 1801 112	1 1/2"	37	67	157.5	80	77	1	12

VALVE KIT:

Part Number	Fit For Fixed/Solid Types FIPV Part #
VVS 1901 KIT	VVST 159
	VVSS 160
	VVSTD 149
	VVSSD 150

VALVE KIT:

Part Number	Fit For Swivel/Rotating Types FIPV Part #
VVS 1902 KIT	VVRT 179
	VVRS 180
	VVRTD 179B
	VVRSB 180B
	VVRPD 1801
	VVRPD 180B1



Oval Hole Flange	Part Number	Fit For Swivel/Rotating Types FIPV Part #	Suitable Size
	VVS 1903	VVRT179, VVRS 180, VVRTD 179B	3/4", 1", 1 1/4"
		VVRSB 180B, VVRPD 1801, VVRPD 180B1	
	VVS 1904	VVRT179, VVRS 180, VVRTD 179B	1 1/2"
VVRSB 180B, VVRPD 1801, VVRPD 180B1			

ISO9001:2008

ARM Supplies Ltd.

E-mail: info@armsupplies.com

F: 1 416 840-8432