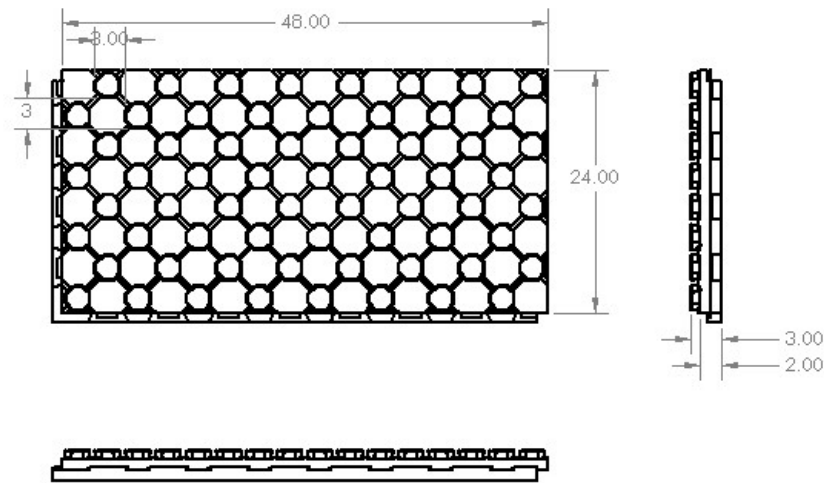


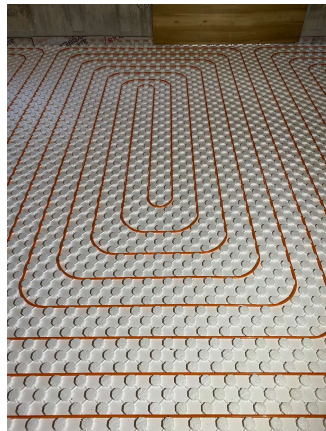
Smart Sheet

Smart Sheet floor heating panel is an all in one solution product, that provides insulation, and holds PEX pipes in place for easy installation.



Advantages of Smart Sheet Panel

- Being molded from Expanded Polystyrene (EPS), results in high Insulation and rigidity.
- Thanks to the unique edge tongue and groove design, when interlocked together, panels will be placed only in the correct nob aligned position.
- The negative angle of the nubs helps easy walk-in installation of the PEX Pipes without the need of staples.
- The Bridges between the nubs provides spacing between the Pipe and the Panel allowing concrete to completely surround the area of the pipe for optimum heat transfer into concrete.
- The unique design provides a compact bundle size, that facilitates easier handling and efficiency in storage.



Smart Sheet

Applications

- Basement slab
- Driveways and walkways (Snow & Ice melting)
- Showrooms, workshops and garages

Technical Data Sheet		
	Smart Sheet Panel	HD Smart Sheet Panel
Nominal Dimensions	24" x 48", (1219 x 610) mm	24" x 48", (1219 x 610) mm
Nominal Area	8 ft ² , (0.74) m ²	8 ft ² , (0.74) m ²
Thickness with nub	3" (76) mm	3" (76) mm
Thickness without nub	2", (51) mm	2", (51) mm
Minimum Pipe spacing	3", (76) mm	3", (76) mm
PEX Pipe Diameter range	1/2" - 3/4", (16)-(20) mm	1/2" - 3/4", (16)-(20) mm
Spacing between Pipe and Insulation	0.20", (5) mm	0.20", (5) mm
Thermal Resistance R-Value	10 R, (1.76) m ² k/w	10 R, (1.76) m ² k/w
Density	1.56 lb/ft ³ , (25) kg/m ³	2.2 lb/ft ³ , (35) kg/m ³
Panel material	EPS	EPS
Pcs/Bundle	8	8
Area covered / Bundle	64 ft ²	64 ft ²
Package Dimension	25" W x 49" L x 18.5" H	25" W x 49" L x 18.5" H