

Submittal Data Sheet



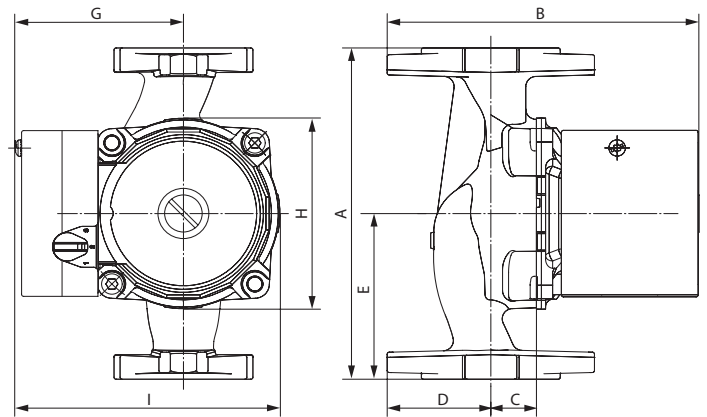
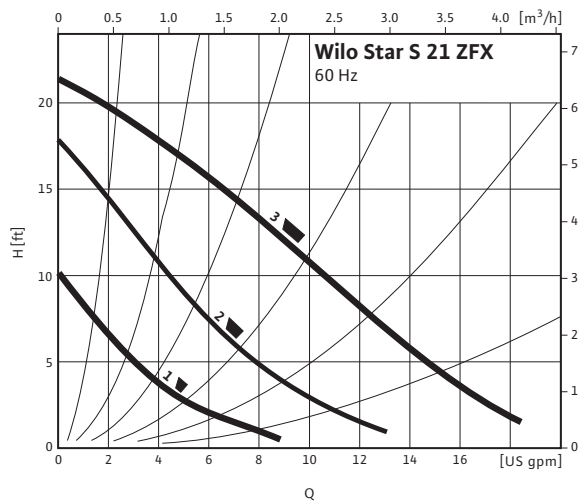
Wilo Star – Residential Wet Rotor Circulators

Star S 21 ZFX



Project:			
Engineer:			
Contractor:			
Submitted By:		Date:	
Approved By:		Date:	

Tag #	Model #	Check Valve	Speed	Flow	Head	Phase	Voltage
	Star S 21 ZFX	n/a				1	115v



Applications	
• Domestic Hot Water	• Air-Conditioning
• Heating & Cooling	• Water/Glycol up to 50%
• Solar Systems	• Geothermal Systems

Materials of Construction	
Impeller	Engineered Composite (40% GF)
Shaft	Stainless Steel AISI 420SS
Bearing	Metal Impregnated Carbon
Volute	Stainless Steel
Pump Housing	Stainless Steel AISI 316L

Technical Data	
Max. Temp. Range	-14°F to 230°F (-10°C to 110°C)
Ambient Temp.	104°F (40°C)
Electrical Connections	1-115
Max. Working Pressure	140 PSI (10 Bar)
Min. Inlet Pressure 122°F (50°C)	0.7 PSI (0.05 Bar)
Min. Inlet Pressure (203°F)	4.4 PSI (0.3 Bar)
Min. Inlet Pressure (230°F)	14.5 PSI (1 Bar)

Dimensions and Weights									
Model	Dimensions - Inches (mm)								Weight lbs (kg)
	A	B	C	D	E	G	H	I	
Star S 21 ZFX	6 ³ / ₈	6 ³ / ₈	7 ⁷ / ₈	2	3 ³ / ₁₆	3 ³ / ₁₆	3 ¹¹ / ₁₆	5 ¹ / ₁₆	6.5
	(162)	(154)	(22)	(50)	(81)	(81)	(93.5)	(128)	(3.0)

Motor Data				
Model	hp	Speed	Watts	FLA
		RPM	W	A
Star S 21 ZFX	1 ¹ / ₂₅	1300-2700	60-110	0.52-0.96

