
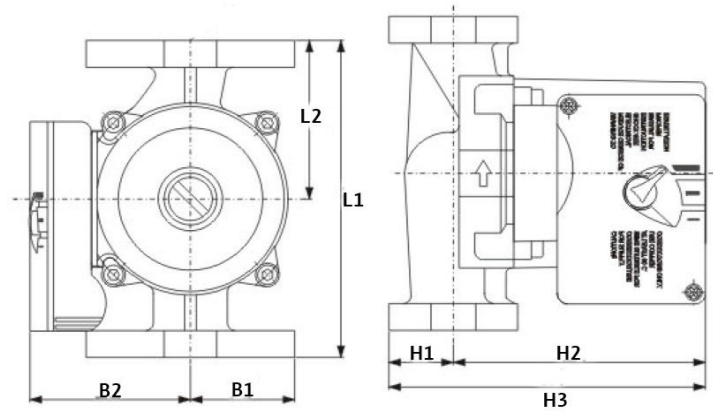
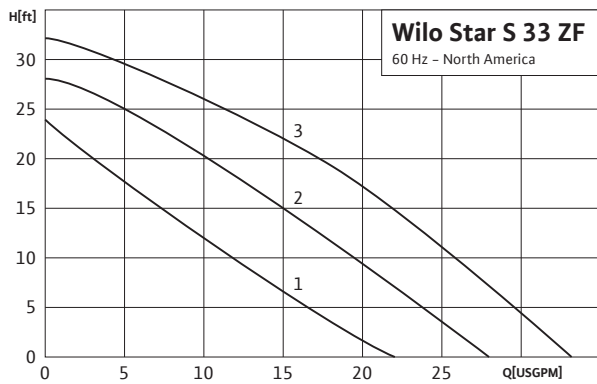


Submittal Data Sheet



Wilo Star – Residential Wet Rotor Circulators

Star S 33 ZF							
		Project:					
		Engineer:					
		Contractor:					
		Submitted By:			Date:		
		Approved By:			Date:		
Tag #	Model #	Check Valve	Speed	Flow	Head	Phase	Voltage
	Star S 33 ZF	n/a				1	115v



Applications	
• Open Systems	• Air-Conditioning
• Heating & Cooling	• Water/Glycol up to 50%
• Solar Systems	• Geothermal Systems

Materials of Construction	
Impeller	Engineered Composite
Shaft	Stainless Steel (1Cr18Ni9Ti)
Bearing	Metal Impregnated Carbon
Volute	Stainless Steel (304)

Technical Data	
Max. Temp. Range	32°F to 230°F (0°C to 110°C)
Ambient Temp.	104°F (40°C)
Electrical Connections	1-115
Max. Working Pressure	140 PSI (10 Bar)
Min. Inlet Pressure 122°F (50°C)	0.7 PSI (0.05 Bar)
Min. Inlet Pressure (203°F)	4.4 PSI (0.3 Bar)
Min. Inlet Pressure (230°F)	14.5 PSI (1 Bar)

Dimensions and Weights								
Model	Dimensions – Inches (mm)							Weight lbs (kg)
	H1	H2	H3	L1	L2	B1	B2	
Star S 33 ZF	1 ³ / ₈	4 ⁵ / ₈	6	6 ³ / ₈	3 ³ / ₁₆	1 ⁷ / ₈	3 ³ / ₁₆	11.0
	(35)	(115)	(150)	(162)	(81)	(48)	(81)	(5.0)

Motor Data				
Model	Horsepower	Speed	Watts	FLA
	hp	RPM	W	A
Star S 33 ZF	1/6	1300-2700	135-230	1.2-2.0

